

BatchTron

THE FULL FEATURED CONCRETE BATCHING CONTROLLER

Ultra high speed batching for Ready Mix, Precast & Products Plants

By **SCALE-TRON**

BatchTron uses PLC and touch screen technology to give you unsurpassed reliability and batching accuracy. All controls are right on the touch screen.

You can customize it yourself to any process, any variation and any additions.

PlantControl allows you to batch directly from a touch screen, PC or tablet and gives you access to the optional BatchLink suite of order entry tools.



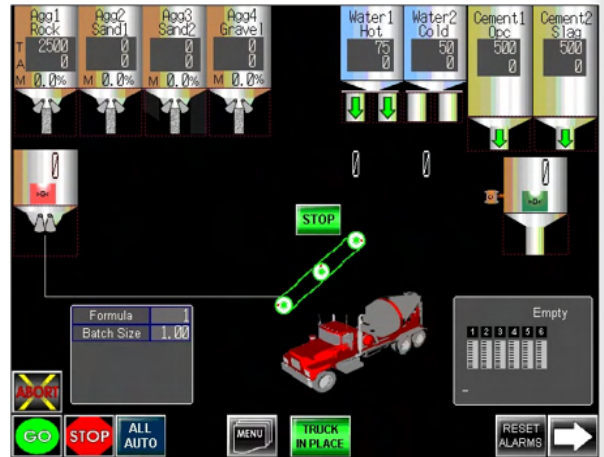
Tailored to your operations:

Precast & Products Plants

Scale-Tron works with customers to plan a method for ordering your concrete and delivering it where you want it. From the designing of your automation system to controlling the delivery of your concrete to multiple stations by belts, traveling hoppers or buckets, do it all from a hand held tablet.

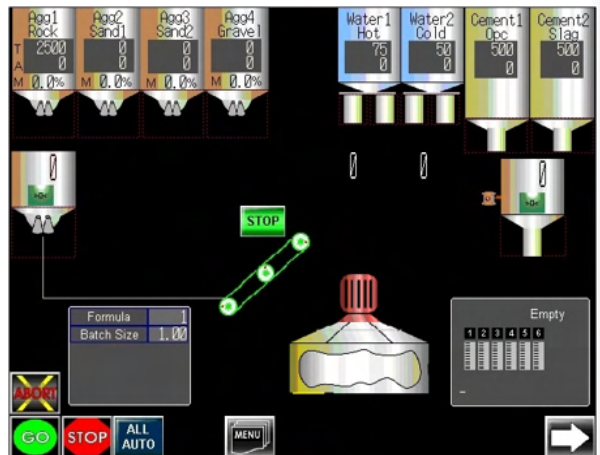
Ready Mix Plants

Scale-Tron works with you to optimize your operation for the fastest production possible. This includes PlantControl which allows you to batch directly from a PC or the optional tablet anywhere within WiFi range. It even allows you to batch from your loading shovel if required. The BatchLink suite of order entry tools allows you to schedule deliveries, assign drivers and trucks to jobs and print delivery tickets. It will interface with most accounting software.



Two models to suit your needs:

BatchTron I is the economical controller for small ready mix and precast plants. Load a formula, choose a batch size and GO. **BatchTron II** is fully programmable and expandable for additions of multiple functions, including multiple mixers.



Experience

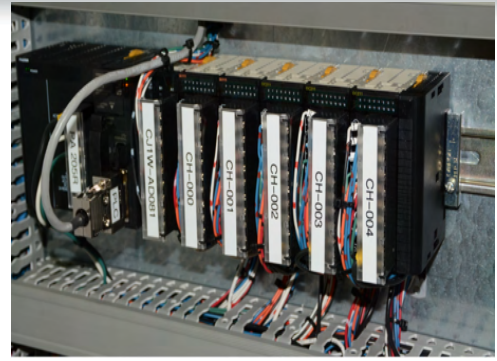
With over 40 years of industry expertise in precast, ready mix, block, brick, pavers, dry bagged products and large civil projects such as dams, Scale-Tron is the only manufacturer to produce all the major components of an automatic concrete production control system (see below). We handle batching, mixing and delivery of all types of concrete, from low-cost automation to high-speed fully automatic production for the most complex plants.

Startup

We offer a full turnkey installation service using our own engineers and Scale-Tron's network of trained dealers. Alternatively, an electrician familiar with industrial controls can install the system from our extensive manual. We recommend that our personnel are present during scale calibration and startup; this allows us to fully train your staff and optimize your plant operation.

Benefits

- Reliable, to give you freedom from costly downtime.
- Freeze-proof industrial PLC technology for rock solid performance.
- Customized to work the way you work, to improve your efficiency.
- All manual controls are right on the touch screen. If you need additional manual buttons, it is a simple and quick software update.
- Not Windows reliant therefore no Windows related issues.



Effortless Expansion

As your operation changes and you add silos, bins or admixtures, you can re-configure the system without the need for an on site visit. We build spare inputs and outputs in to let you make these changes quickly and at minimal cost.



Warranty and Support Plans

We supply our systems with 12 months unlimited support included. Thereafter, we offer cost effective support plans:

Bronze package - unlimited priority phone and online support.

Silver package - unlimited phone and online support support plus free software updates pertaining to your revision of BatchTron.

Gold package - all of the above plus free replacement parts for your BatchTron (subject to our fair use policy).

SCALE-TRON
Automation, sensors and weighing systems

scaletron.com

info@scaletron.com

514-940-0337

1-800-632-7083 (USA & Canada)

2113C St Regis Blvd. Dollard-des-Ormeaux,
Quebec, Canada H9B 2M9